

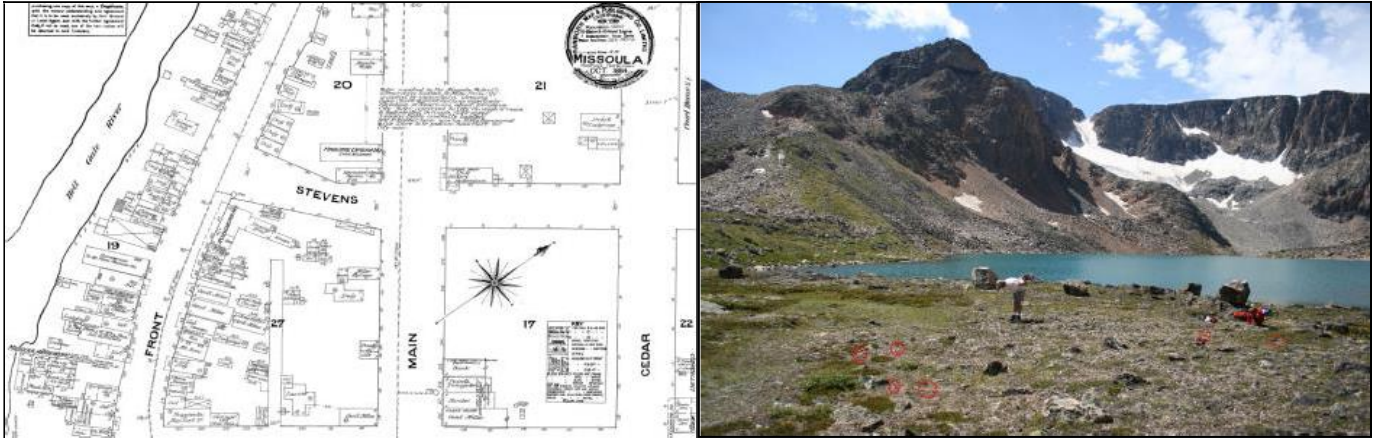
ANTHROPOLOGY 466 Archaeological Survey

COURSE SYLLABUS

FALL 2020

THE UNIVERSITY OF MONTANA, DEPARTMENT OF ANTHROPOLOGY

THURSDAYS 11:00 AM – 1:50 PM, “Classroom” will Consist of FIELD SITES and OTHER PLACES TBD



Images include: (Left) historic Sanborn Insurance map showing Missoula in 1884; (right) lithic scatter at Turgulse Lake, Beartooth Range (photo by Timothy R. Urbaniak); example of mapping by annotating digital photos.

INSTRUCTORS:

Kelly J. Dixon

Office: Social Sciences Building, 235

Email: kelly.dixon@mso.umt.edu

Office hours: By appointment, via Zoom, Phone, or Outdoor Locations

Nikki Manning

Office: Social Sciences Building, 244

Email: nikki.manning@umontana.edu

Office hours: By appointment, via Zoom, Phone, or Outdoor Locations



As a fun and engaging adaptation to our pandemic world, **we will take as many field trips as possible** to provide you with socially/geographically distant, experiential education. Field trips were already an integral part of this course. We can therefore seize the pandemic time to embrace the field trip requirement and hold most of our course meetings outdoors. The various outdoor class meeting locations are listed on the Course Schedule below. Many of these are still TBD and will depend on many factors that we will discuss as the semester evolves. We will post maps, images, and other content on the ANTY 466 Moodle page for you to reference with your phone or other electronic device of your choice during our field trips.

By the latter part of the semester, we may transition to Zoom sessions as determined by weather and/or health climate shifts. So let's explore while we can!

SAFETY MESSAGE: Pandemic Precautions and Protocols

In order to communicate expectations and important safety messages to students returning to the classroom, please review the following important information:



- Mask use is required within the classroom and during field trips where we are in contact
- Each student is provided with a cleaning kit. The expectation is that students will clean their personal work space when they arrive for class, and before they leave the classroom
- Classrooms may have one-way entrances / exits to minimize crowding
- Students should be discouraged from congregating outside the classroom before and after class
- Specific seating arrangements will be used to ensure social distancing and support contact tracing efforts
- Class attendance will be recorded to support contact tracing efforts
- Drinking liquids and eating food is discouraged within the classroom (which requires mask removal); hopefully most of our time will be spent outdoors so you will have opportunities for water breaks since we meet for such a long time and will be out on the move.
- Information on the nearest “refill” stations for cleaning supplies/hand sanitizer if applicable
- If the class is being recorded, students must be notified of the recording
- Stay home if you feel sick and/or if exhibiting COVID-19 symptoms
- If a student is sick or displaying symptoms, please contact the Curry Health Center at (406) 243-4330
- Up-to-Date COVID-19 Information from the University of Montana can be found here: UM Coronavirus Website: <https://www.umt.edu/coronavirus> and here: UM COVID-19 Fall 2020 website: <https://www.umt.edu/coronavirus/fall2020.php>
- All of us must remain vigilant outside the classroom in mitigating the spread of COVID-19

ABOUT THIS CLASS:

Throughout the semester, remember that this is **your** class. What you get out of this class is a direct result of what you are willing to put into it. We will work very hard to tailor topics, readings, projects, and experiences to your interests so that you can relate the survey methods taught in this class to your current life and future career goals. To do this, you will need to let us know what those interests are and if you do not know just yet, to not be shy to say so. That is why we are here. Be prepared each week and bring your energy and best self and we will have a very productive semester – and maybe even LOTS OF FUN!

We realize that these are strange times and want to be flexible with our pace and expectations. At a minimum, we want to make sure that you will be able to complete meaningful tasks that will demonstrate the knowledge and skills you acquire in this class.

COURSE DESCRIPTION:

Archaeological survey is the process of identifying and documenting archaeological sites. This is a course in archaeological field methods that provides students with a mix of experiences and exposure to general survey

and sampling techniques, map-making, site form preparation, historical research, laboratory analyses, report write-up and/or NRHP evaluation, experimental field methods, and more. At the conclusion of this class students will have visited field sites¹ and acquired the ability to:

- Locate, survey, assess, document/map, and interpret cultural heritage resources, including archaeological remains, historic structures, plants, water sources, and other resources, with special emphasis on resources that are culturally significant to descendant communities.
- Understand and apply field procedures for documenting and reporting on such resources, including precise note-taking and photographic documentation.
- Employ ethical practices in field, lab, office, and curation settings.
- Appreciate the cultural protocols for using and documenting traditional cultural resources like plants.
- Identify the contents of a site form and complete a site form.
- Locate/place cultural resources on a 7.5 minute USGS map.
- Understand how a GPS (Global Positioning System) unit works.
- Maintain a field notebook.
- Comprehend various types of archaeological sites, CRM practices and laws, as well as the various theories and methods of cultural heritage investigations.
- Understand how to locate and integrate archival, oral, and other evidence with "data" from archaeological field sites.
- Recognize how the systematic process of field documentation dovetails with the process of collecting, processing, and curating artifacts.

READINGS AND ONLINE RESOURCES:

REQUIRED TEXTBOOK:

Heather Burke, Claire Smith, and Larry Zimmerman

2008 *The Archaeologist's Handbook* (North American Edition), AltaMira Press, Walnut Creek, California.

OPTIONAL TEXTBOOKS:

Manning, Nikki

2015 *Historic Underground Missoula*, History Press, Arcadia Publishing, Charleston, South Carolina.

McCleary, Timothy

2015 *Crow Indian Rock Art: Indigenous Perspectives and Interpretations*, Routledge, New York and London.

ADDITIONAL READINGS – See **Course Bibliography** for additional pdfs or copies of pertinent readings from some of the sources below [but not limited to these] will be assigned throughout the semester.

FIELD SUPPLIES:

You need the following materials for this course:

1. Directional compass (class will supply some for training purposes, but it is always good to have your own for survival);
 2. Field notebook and appropriate writing tools;
 3. MAYBE a tape measure and ruler – be sure they are metric **AND** English (i.e. centimeters/meters and inches/feet);
 4. Smartphone and/or GPS Unit and/or GPS app on your Smartphone (we will not require you to purchase these, so please do not fret if you do not have them);
 5. Digital camera – only IF you already own one (please do not buy one special for this class!); also, the Smartphone camera should be okay, depending on your project;
 6. Photo scale (we have some, so this is not required, but nice to have on hand if you are building a digkit).
-

ATTENDANCE:

As this is an upper-level class, complete attendance is expected, and attendance will help make decisions about a student's final grade in borderline cases. There will also be some occasional in-class projects and participation exercises.

ACADEMIC INTEGRITY:

The University of Montana expects its students to be academically honest, particularly in regard to plagiarism. "Plagiarism is the representing of another's work as one's own." Both copyright laws and University policies are rigid as concerns plagiarism. Consult the current "Student Conduct Code" for details regarding penalties for plagiarism.

GRADES:

Grade assessment will be based on the following assignments.

Assignment 1: Practice the Paperwork – Find and/or create a site form. Due: September 3	50 points
Assignment 2: Project Proposal/Summary Due: September 10	50 points
Assignment 3: Archives Assignment Due: September 24	50 points
Assignment 4: Project Photos/Photo Log Draft Due: October 8	50 points
Assignment 5: Sketch Map Draft Due: October 15	50 points
Assignment 6: Video Log Due: October 29	50 points
Field Notebook Due: November 12	100 points
Final Project: Completed Site Form, Report-Quality Map, Photos, Files, and Log Draft Due: November 12; Final Due: November 20	100 points
Final Project Presentation Due: November 20	100 points
Attendance and Participation (includes class discussion and in-class assignments)	100 points
<hr/> TOTAL	700 points

I will assign +/- grades and final grades will be based upon the following average scores for the journals, exam, research paper and in-class, exercises and participation: A (100-95), A- (94-90), B+ (89-88), B (87-83), B- (82-80), C+ (79-78), C (77-73), C- (72-70), D+ (69-68), D (67-63), D- (62-60), F (59 or less).

STUDENTS WITH DISABILITIES:

The Department of Anthropology is committed to equal opportunity in education for all students, including those with documented physical disabilities or documented learning disabilities. University policy states that it is the responsibility of students with documented disabilities to contact instructors to discuss appropriate accommodations to ensure equity in grading, classroom experiences, and outside assignments. The instructor will meet with the student and the staff of the Disability Services for Students (DSS) to make accommodations. Please contact DSS (umt.edu/dss; 406. 243.2373) for more information.

Image captions:

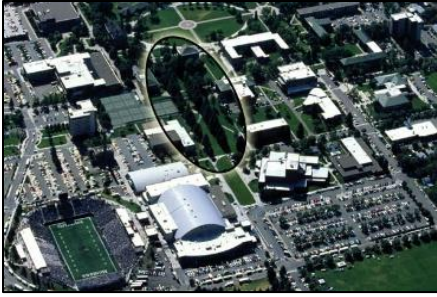
Map showing the archaeological remains of a Chinese railroad worker cabin at Donner Summit, Sierra Nevada range, California (from Baxter and Allen's site form for CA-PL-2002).

Grizzly statue with face mask, UM Main Hall in background (photo by Tommy Martino).

Course Schedule is below.

COURSE SCHEDULE

Week 1 - Thursday, August 20



Outdoor, Place-based Location: Memorial Row, UM Campus, East Side of Social Science Building

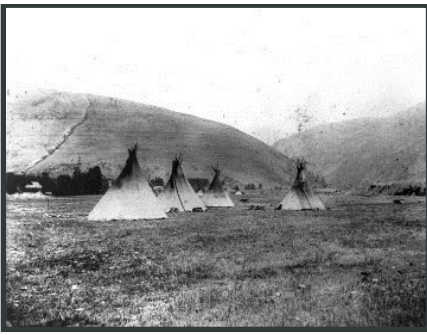
Welcome and Introduction to Archaeological Survey

- Syllabus, Course Content, and Moodle
- Student Introductions, Skills, Expectations, Concerns
- Field Trip Discussion (Managing Logistic and Expectations)
- Archaeology and Past Pandemics in Our Back Yard: Memorial Row in Context
- Field Notebooks and Documentation

Readings:

- Explore this [UM web page on the history of Memorial Row](#)

Week 2 - Thursday, August 27



Outdoor, Place-based Location: Salish Homeland, Hellgate Canyon, Kim Williams Trail, Clark Fork River (Meet at Memorial Row like last week and we will walk and talk as a group.)

Archaeological Survey in the 21st Century: Ethics, Stewardship, & Protection

- Combining Indigenous systems of knowledge/understanding with Western science
- Indigenous Perspectives on Archaeological Survey
- Archaeology and Social Justice
- Collaborative and Community-based Archaeology

Readings:

- Burke et al. Chapter 1
- Dongoske et al. 2015

- Carter et al. 2005
- Atalay 2012, Chapter 1
- Cowell-Chanthaphonh et al. 2010
- Pokotylo & Guppy 1999
- [Society for American Archaeology Principles of Archaeological Ethics](#)
- [Society for Historical Archaeology Ethics Principles](#)

Optional Readings:

- McCleary 2015
- Spiegel 2014
- Shoup & Monteiro 2008

Week 3 - Thursday, September 3



Outdoor, Place-based Location: Base of “M” Trail, Mount Sentinel

Assignment 1 Due Today: Search for a site form and bring it to class for discussion.

Field Project Preparation

- Site Forms Introduction
- “Site Types”
- Research Design (*Always be thinking of clearly presenting your goals, methods, outcomes, and paths for future work!*)
- Report Writing, Developing Historic, NRHP Nominations
- Final Project Discussion

Readings:

- Burke et al., Chapters 3 and 10
- [National Park Service Publications - National Register of Historic Places](#)

Optional Readings:

- Manning 2015
- Parker 2006
- Byrd et al 2012

Week 4 - Thursday September 10



CLASS LOCATION: Stay home. 😊 This will have to be a Zoom day because our guests are from far away.

Assignment 2 Due Today: Write up 1-2 paragraphs summarizing your proposed ideas for an Arch Survey Final Project Topic (this is key to announce now because your other assignments will be related to this)

Employment and Career Opportunities

- Applying for Federal Jobs: Hints for Prospective Employees (like you!)

Guest speakers: Ayme Swartz, Archaeologist, Colville National Forest; Jamie Litzkow, BLM Archaeologist, Spokane Office; Carla, Archaeologist, USFW, Western US

- Into to Archival Research, Oral History, & the IRB (Begin - if time)

Readings:

- Burke et al., Chapter 1
- [USA Jobs Search Website](#)
- [Advisory Council on Historic Preservation](#)
- [National Register of Historic Places - Seven Aspects of Integrity](#)

Optional Readings (to get a jump on next week):

- Fliess 2000
- Leone 1988
- Stokes & Jones 2012

Week 5 - Thursday, September 17



Outdoor, Place-based Location: Downtown Missoula

Field Project Implementation

- Site Forms, continued
- Archival Research, continued

- Documenting Historic Structures
- Buildings as Artifacts
- Cultural Landscapes and Landscape Archaeology
- Sacred Sites

Readings (Don't panic! You don't have to read them all!):

- Burke et al. Chapter 6
- Fliess 2000
- Mitchell 2017
- Reynolds 2009
- Media Sheets, Press Release on Urban Archaeology Downtown Missoula
- Smithsonian Online News: <https://www.smithsonianmag.com/smart-news/beneath-missoula-remnants-19th-century-red-light-district-and-chinatown-180974230/>
- Parker & King 1998
- Teeman 2008
- Alberti 2008
- Melnick 1980
- Melnick 1985

Optional Readings:

- Splain and Kevlin (n.d.)
- South Carolina State Historic Preservation Office 2003
- Slaton 2005
- Powell 1967
- Sisson 2017
- Manning 2015
- McCleary 2015

Week 6 - Thursday, September 24



Outdoor, Place-based Location: Greenough/Five Guys Area

Assignment 3 Due Today: TBD Archival Assignment

Field Project Implementation

- Survey Tools: Topo Maps, Compass Use, UTM's, Survey Transects, Grids, Sanborn Maps, and others
- Pedestrian Survey
- Making a Sketch Map
- Field (and Lab) Photography
- Excavation Brief, Shovel Testing, Artifact Identification

Readings:

- Burke et al. Chapters 2, 4, 5, and 9

- Heilen and Altschul 2013
- McBride, et al. 2017
- Valentino 2009
- Fisher 2009

Optional Readings:

- Manning 2015
- [SHA - Preservation Photography: Roles and Rules](#)

Week 7 – Thursday, October 1



Outdoor, Place-based Location: TBD

Non-Invasive Surveys of Areas with Human Remains

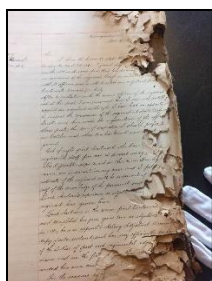
- Institute for Canine Forensics (ICF), Special Guests with Demonstrations, Human Remains Detection Dogs
- Large-scale Surveys of Transcontinental RR Camps – Archaeologies of the Chinese Workers
- Sustained Pressure and Attention: Archaeology and Social Justice (a continued theme)

Guest speakers: John Grebenkemper and Kayle the Border Collie, Institute for Canine Forensics; Adela Morris and Four-legged Researcher Name TBA

Readings:

- Baxter and Hargrave 2015
- Grebenkemper
- [Bone-sniffing Dogs Hunt for Amelia Earhart's Remains](#)
- Merritt, et al. 2012
- Smiley Slough Site Record (DRAFT)

Week 8 – Thursday, October 8



CLASS LOCATION: Stay home. 😊 This will have to be a Zoom day for our virtual tour.

Assignment 4 Due Today: Photos and Photo Log Draft

Digital Data Management and Virtual Archives Visit

- Data Management
- Special Zoom Session Visit to the with UM Archives, Hosted by Donna McCrea (1-1:50 pm)

Readings:

- UM Mansfield Library, K. Ross Toole Archives and Special Collections Reference Sheet (posted on Moodle)

Optional Readings:

- Leone 1988
- Stokes & Jones 2012

Week 9 – Thursday, October 15



Class Location: TBD

Assignment 5 Due Today: Sketch Map Draft

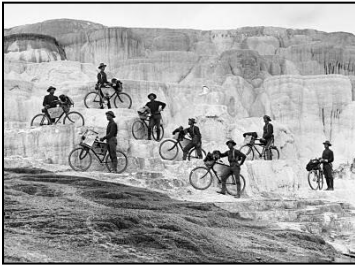
Cultural Resource Management (CRM) Laws

- CRM Laws, Overview and History
- Video Logs, Fun Public Dissemination

Readings:

- Burke et al. Chapter 8
- Barile 2004
- Review Dongoske, et al. 2015
- Young et al (Environmental Law Institute) 2010
- Phillips 1979
- Adler 2006
- National Park Service Guide to TCPs (Traditional Cultural Properties)
- [Section 106 of the National Historic Preservation Act](#)

Week 10 – Thursday, October 22



Class Location: TBD (Fort Missoula?)
Archaeology and Social Justice, NAGPRA

- NAGPRA
- If possible, we may take a field trip to Fort Missoula (not related to NAGPRA!)

Readings:

- O’Sullivan 2001
- Harms 2012
- Bruning 2006

Week 11 – Thursday, October 29



CLASS LOCATION: Stay home. ☺ This will have to be a Zoom day for our guests.

Assignment 6 Due Today: Video Log

State Historic Preservation Office (SHPO) and Survey, Compliance

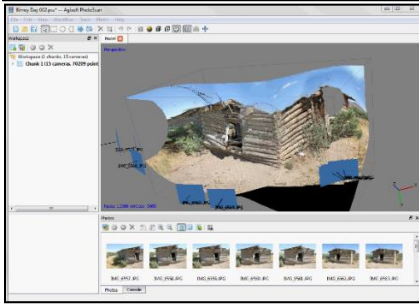
- Site Records/Antiquities Database Management
- CRM Laws and Daily Heritage Practice
- Project and Internship opportunities?

Guest speakers: Montana State Historic Preservation Office: Damon Murdo; Archaeological Records Guru; Jessica Bush, State Archaeologist; Laura Evilsizer, Compliance Officer

Readings:

- [Montana State Historic Preservation Office](#)

Week 12 – Thursday, November 5



CLASS LOCATION: Stay home. 😊 This will have to be a Zoom day for our guest.

Tech, and 21st-Century Arch Survey

- Subsurface Imaging
- GIS
- 3-D renditions
- Photogrammetry
- And more!

Guest speaker: The one and only Dr. Timothy Rostov Urbaniak, Montana State University Billings (retired)

Readings:

- [Pictograph Cave State Park C-SPAN Video](#)
- Campana 2012
- Gilliland & Novak 2006

Optional Readings:

- Urbaniak 2014
- Urbaniak & Dixon 2015
- McCleary 2015

Week 13 – Thursday, November 12



Class Location: TBD

Assignments Due Today: Field Notebooks and Final Project Drafts

Future of Archaeological Survey

- Synthesizing archaeology, history, preservation, technology (cataloging and curation, too!)

- Final Project Progress Report (have a DRAFT ready for review)

FINAL EXAM – Friday, November 20 - 10:10 am-12:10 pm

Student Presentations and Summaries of the Semester's Findings

