

**ANTHROPOLOGY 210N**  
**Introduction to Physical Anthropology**  
**Fall 2017**

**Dr. Kirsten A. Green**

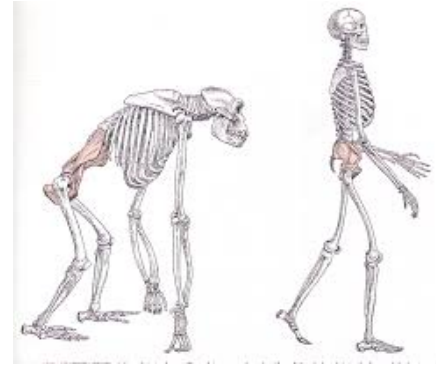
**Email:** [Kirsten.green@umontana.edu](mailto:Kirsten.green@umontana.edu)

**Office:** SS 217

**Office Hours:**

Monday, Wednesday, & Friday 1:00-4:00pm

Tuesday & Thursday by appointment



**COURSE DESCRIPTION**

This course is designed to introduce students to the main subfields of Physical Anthropology. The course is organized into four sections:

1. We will review the processes of evolution and natural selection, including discussion of evolutionary fitness, adaptation, basic inheritance, and population genetics.
2. We will discuss the diversity, evolution, ecology and behavior of non-human primates, and consider how insights from the study of non-human primates can enrich our understanding of humans.
3. We will trace the morphological and technological evolution of humans from the earliest bipedal woodland apes through Neanderthals and modern humans.
4. We will consider how an evolutionary framework can enrich our understanding of modern human genetic, phenotypic, and cultural diversity and behavior.

By the end of the course, students should understand the broad principles and patterns characterizing social, behavioral, and morphological aspects of human evolution.

**GENERAL INFORMATION**

Lectures are on Monday, Wednesday, and Friday from 11:00am-11:50pm in 352 Social Sciences.

If you have questions, I encourage you to contact your instructor via email, which is the fastest and best way to get in touch. Please take into account that your instructor should be treated politely in your correspondence.

**TEXTBOOK**

*How Humans Evolved*. Sixth Edition (2011) Robert Boyd and Joan Silk. New York: W. W. Norton and Company.

Please read the assigned chapters in the textbook **prior** to attending each lecture. Note that while lecture topics will reference readings, some topics and examples presented in lecture are not included in the textbook, and vice versa.

Earlier editions of the text, published before 2011, are available and can be used by students, but please note that the readings outlined for each class are based on the 2011 edition and modifications may need to be made. Any material not included in earlier editions is fair game for exams.

## GRADES

The final grades for the course **will be curved** (though not individual assignments). Grades will be calculated as followed:

- Written assignment: 20%
- Genetics Handout: 10%
- Midterm Exam #1: 15%
- Midterm Exam #2: 15%
- Midterm Exam #3: 15%
- Final Exam (cumulative): 25%

**NO** extra credit will be offered.

Writing Assignment: A written assignment will consist of a short essay answer to questions relating to classroom material. The writing assignment will be due on **October 30th**. The prompt will be posted on Moodle. This assignment will test your ability to apply concepts that you have learned in class, and will be graded for content as well as clarity.

Make-up or missed exams: Exams will **not** be re-administered unless approval is obtained at least 24 hours prior to the exam, with a legitimate excuse (such as health reasons, with a doctor's confirmation). If you miss an exam you must contact your professor within 24 hours, with a documented excuse, in order to obtain permission to take the exam. If you know you will miss an exam ahead of time you must make an appointment at least **two weeks** in advance to take it early.

Late assignments: Will not be accepted, unless you have a documented, legitimate excuse and have contacted your instructor within **24 hours** of the due date. Please contact your instructor well in advance if you know there will be a problem submitting your assignment. Email submissions will **not** be accepted.

## MULTIMEDIA INFORMATION

Course website: There is a Moodle website for this course to which all enrolled students have access. You can log onto this website at <http://umonline.umt.edu>. Students are advised to check the website regularly (at least once a week) for announcements, supplemental information, grades, and related links.

Lecture slides: Files containing lecture slides will be available on the course website at the beginning of each week and will remain on the course website for the duration of the semester. It is **highly recommended that students print or bring electronic copies of the slides to lecture** to take notes on.

Warning: Lecture slides will be posted in the hope they will provide a convenient resource for you to review sections that you may wish to see again, or to view lectures you may have missed due to unavoidable (and rare) absences from lecture. Please be aware that there is always a

chance that technical problems may interfere with the website and lecture slides. Do not wait until the night before an exam to log on in search of materials.

### **HOW TO SUCCEED IN MY CLASS**

- 1) Attend every lecture and take notes on the material.
- 2) Ask questions when confused about a topic or concept, either in class or during office hours, well before an exam.
- 3) Complete readings before class, annotating or taking notes while reading.
- 4) Participate in discussions of the material, either in class or with the TA and instructor.
- 5) Maintain a positive, self-motivated attitude.

### **CODE OF ACADEMIC CONDUCT**

With regard to academic dishonesty, this class has a zero-tolerance policy and will promptly deal with any acts of academic dishonesty (cheating, plagiarism, or unauthorized help on assignments, etc.) according to university policy. For further information on what falls into these categories see: [http://life.umt.edu/vpsa/student\\_conduct.php](http://life.umt.edu/vpsa/student_conduct.php). If you have questions or concerns, please feel free to contact your professor.

### **STUDENTS WITH DISSABILITIES**

Students with disabilities may request reasonable modifications by contacting your instructor. The University of Montana assures equal access to instruction through collaboration between students with disabilities, instructors, and Disability Services for Students (DSS). “Reasonable” means the University permits no fundamental alterations of academic standards or retroactive modifications. (For other options see <http://www.umt.edu/disability>).

Now that you have read the syllabus entirely, in order to obtain one extra point on your first midterm exam grade, please use a full sheet of paper and write in ink: “I have read and understand what will be required of me in Anthropology 210, and will ask questions on anything I am confused by.” Sign your name and write it legibly, include your student ID number, and give it to your instructor before the end of the second week of class.

ANTHROPOLOGY 210			
Week	Date	Topic	Reading/assignments
1	9/1	Introduction & Overview	Course syllabus
2	9/4	NO CLASS – Labor Day	
	9/6	Introduction to Evolution	Chapter 1
	9/8	Definition of a species & EEA	Chapter 4
3	9/11	Natural Selection & Adaptation	
	9/13	Altruism & Inclusive Fitness	Pgs 164-166
	9/15	Mendel’s Pea Plants	Pgs 22-33
4	9/18	DNA & what it does	Pgs 34-47
	9/20	Population Genetics (Hardy-Weinberg)	Pgs 48-59
	9/22	Forces of Evolution	Pgs 59-73 <b>Genetics Handout DUE</b>
5	9/25	Anthropological Genetics	
	9/27	Life “Primates”	
	9/29	<b>MIDTERM EXAM #1</b>	
6	10/2	Intro to Primates & Geologic Perspective	Pgs 102-118
	10/4	Primate Origins	Chapter 9
	10/6	Of Guts and Teeth	Pg 108-109
7	10/9	Jarman-Bell & Fallback foods	Pgs 118-132
	10/11	Life History & Sexual Selection	Chapter 6
	10/13	Mating Systems	
8	10/16	Apes	
	10/18	Fossil Dating	Pgs 198-201
	10/20	<b>MIDTERM EXAM #2</b>	
9	10/23	Bipedal Apes	Pgs 219-230
	10/25	Australopithecines	Pgs 230-246
	10/27	Hominin Diversification	
10	10/30	Origins of <i>Homo</i>	Chapter 12 – <b>Writing Assignment DUE</b>
	11/1	Neanderthals	
	11/3	Early modern humans	Chapter 13
11	11/6	Hominin tool use	Chapter 11
	11/8	<b>MIDTERM EXAM #3</b>	
	11/10	NO CLASS – Veterans Day	
12	11/13	History of the concept of race	
	11/15	Craniology & Eugenics	
	11/17	Phenotypic Traits I	Chapter 14
13	11/20	Phenotypic Traits II	
	11/22	NO CLASS - Thanksgiving	
	11/24	NO CLASS - Thanksgiving	
14	11/27	Cultural Evolution	Pgs 378-388
	11/29	Evolution & Modern Human Behavior	Pgs 366-378

	12/1	Human Fairness	Chapter 7
15	12/4	Human Mate Choice	Chapter 16
	12/6	Human Parenting & Demographic Trans.	
	12/8	Forensic Anthropology I	
16	12/11	Forensic Anthropology II	
	12/13	Review Session	Optional
	12/18	<b>FINAL EXAM: 8:00am-10:00am in SS 352</b>	

\*Small changes in the above calendar and syllabus are at the discretion of the course instructor, but will be announced during class.